

VOLTAS *SMART DUCTED* SYSTEMS

with Extensive Range of Products



High Static Units



Ductable Split AC

Packaged AC



ABOUT VOLTAS

Voltas Limited is a premier air conditioning and engineering solutions provider and a Projects specialist. Founded in India in 1954, Voltas Limited is part of the Tata Group, with products ranging from Air Conditioners, Air Coolers, Air Purifiers, Water Dispensers, Water Coolers, to Commercial Refrigeration products. The company also offers engineering solutions for a wide spectrum of industries in areas such as heating, ventilation and air conditioning, refrigeration, electromechanical projects, electrification, textile machinery, mining and construction equipment, water management & treatment, cold chain solutions, building management systems, and indoor air quality. The Company has also launched its range of Voltas Beko Home Appliances, through its new JV in India, in equal partnership with Arcelik.

Voltas is one of the leading companies within the Tata group and is the undisputed market leader in room air conditioners in India with the largest category distribution network of dealers spread across the country. With state of the art manufacturing facilities at Vadodara and Pantnagar, Voltas possesses end to end capability in manufacturing of room and commercial air conditioners, refrigeration equipment, water coolers including commercial refrigerators and many more products in the air conditioning domain. Our products are futuristically designed and energy efficient for the ever-evolving smart consumer and supported by a highly responsive post sales service network. Founded by Jamsetji Tata in 1868, the Tata group is a global enterprise, headquartered in India, comprising 30 companies across ten verticals. The group operates in more than 100 countries across six continents, with a mission 'To improve the quality of life of the communities we serve globally, through long-term stakeholder value creation based on Leadership with Trust'. In 2020-21, the revenue of Tata companies, taken together, was \$103 billion (INR 7.7 trillion).



WELCOME TO THE WORLD OF COMMERCIAL AC



Voltas has always been synonymous with cooling in India. Our commercial products are known for being the best in category.

Our range of commercial air conditioners are always evolving to surpass customer and environmental standards. Our extensive range of products and services ensures that no matter the cooling requirement for your business, we have the solution.

OUR RANGE OF COMMERCIAL AC

Chiller | VRF | Ducted and Package AC

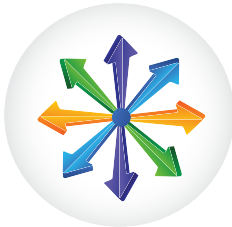
Light commercial (Cassette, Tower, Freematch and MultiMax)

VOLTAS MICRO-PROCESSOR CONTROLLED DUCTED SYSTEMS

Designed to meet every cooling need of the customer with extensive range of Ductable & Packaged Air-conditioning units.



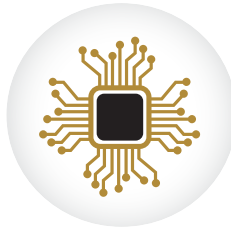
VALUE FOR MONEY



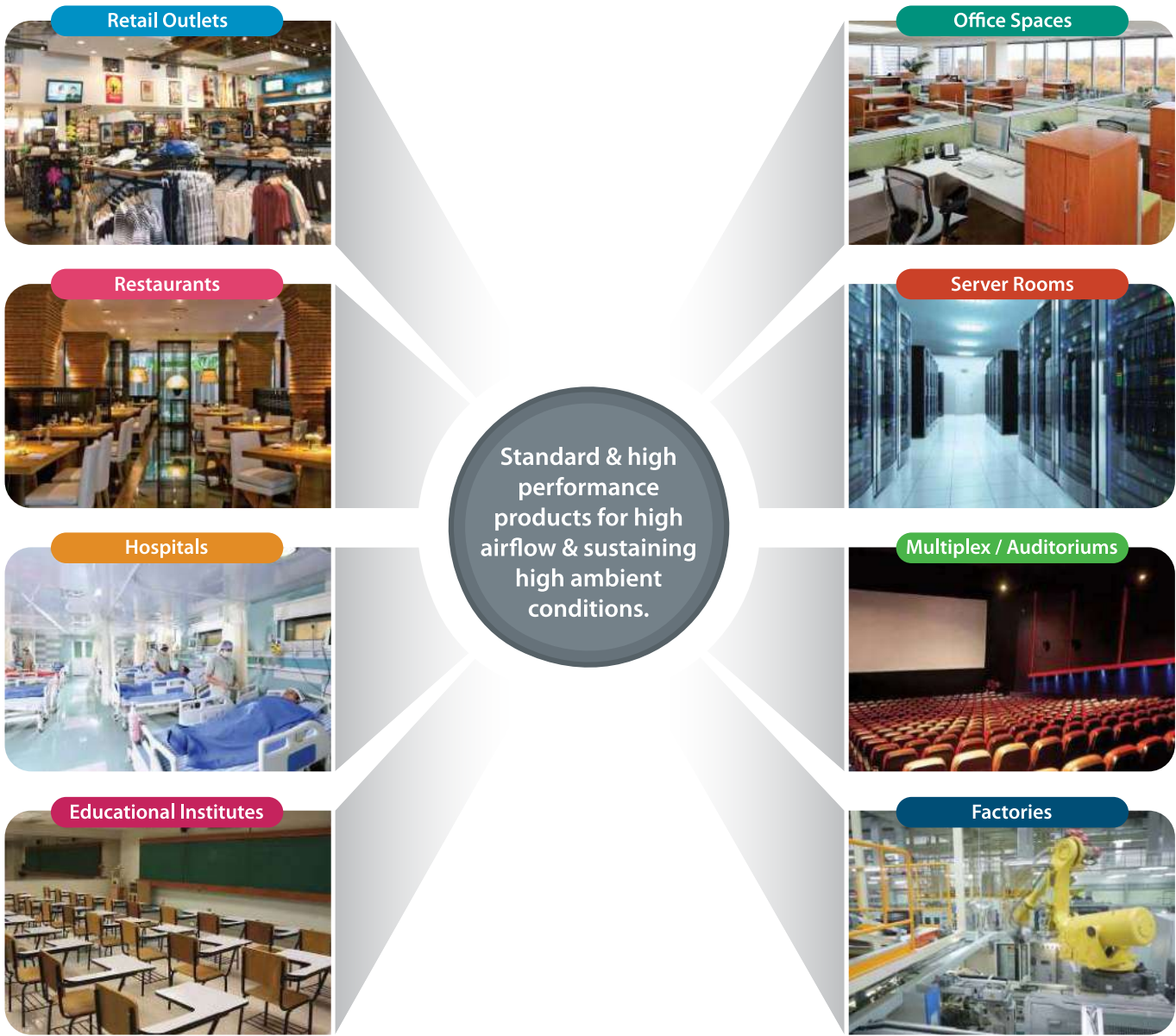
WIDE PRODUCT RANGE



EASE OF SERVICE







IOT ENABLED



PRODUCT LINEUP

VOLTAS Ductable & Packaged Units are available in both **Air-cooled** and **Water-cooled** types making it suitable for every customer need. Voltas Cares for the environment, hence refrigerants* used in our systems are R407C and R410A.

UNIT TYPE / APPEARANCE	REFRIGERANT	5 TR	5.5 TR	7.5 TR	8.5 TR	10 TR	11 TR	15 TR	17 TR	20 TR	21 TR
Standard A/C Ceiling suspended Ductable Split Units 	R22 / R407c	●		●		●		●		●	
	R410a		●		●		●		●		●
Standard W/C Ceiling suspended Ductable Split Units 	R22 / R407c	●		●		●		●			
	R410a		●		●		●		●		
Standard A/C Floor Mounted Packaged Units 	R22 / R407c	●		●		●		●		●	
	R410a		●		●		●		●		●
Standard W/C Floor Mounted Packaged Units 	R22 / R407c	●		●		●		●			●
	R410a		●		●		●		●		

KEY FEATURES



Energy Efficiency

- Energy efficient scroll compressor
- Internally grooved copper tubes
- Microprocessor controller



Silent Indoor & Outdoor Units

- Technologically advanced components
- Insulation to all critical parts
- Rubber pads for reduced vibration



Space Saving

- Compact sized ODUs & IDUs
- No floor space required for ductable IDUs
- ODUs can be installed on wall with bracket



Blue Fin treatment

- Anti-corrosive hydrophilic coating
- Optimum heat exchange in all climates

Factory Charged Units

- Standard refrigerant charge from factory for all Ductable & W/C Packaged units
- Reduction in installation & commissioning time



Slim Ducted IDUs

- Enable high false ceiling height
- Improved aesthetics



Indoor Air Quality

- Special synthetic woven filters
- Easily removable and washable
- Ensure clean air all the time



Reliability

- Use of sophisticated tooling and machinery
- Modern R&D facility
- Best-in-class products
- High levels of reliability



Maintenance Friendly design

- Easy access to all sections
- Ease of serviceability
- Reduction of down time



MICROPROCESSOR-BASED CONTROLLER

Advanced Controller installed on all the units offers you the following benefits :



PACKAGED UNIT CONTROLLER



DUCTED UNIT CONTROLLER



Large LCD Screen *
Easy readability



Auto Start Mode
For automatic start,
after a power failure



Inbuilt Temperature Sensor
For precise control within
+/- 0.5deg C



Anti-recycle Timer
Compressor starts after set
delay, enhancing its life



4 Modes of Operation
Cool, Dry, Fan and
Energy Save



Motor Protection Device
Protection from
phase reversal, imbalance,
overload & single phasing



Energy Saving Mode *
Auto switch-off
of condenser fans when
compressor trips



Fan Speed Selection *
Low, Medium, High, Auto



Self-Diagnosis Function
Constant monitoring of
errors with alarms



**Optional Touch
Controller for PAC**
Makes your unit look
SMART



**Equalization of
Compressor Runtime**
Ensures a longer life
for compressors



On /Off Timer *
Schedule your AC run-time
in a day

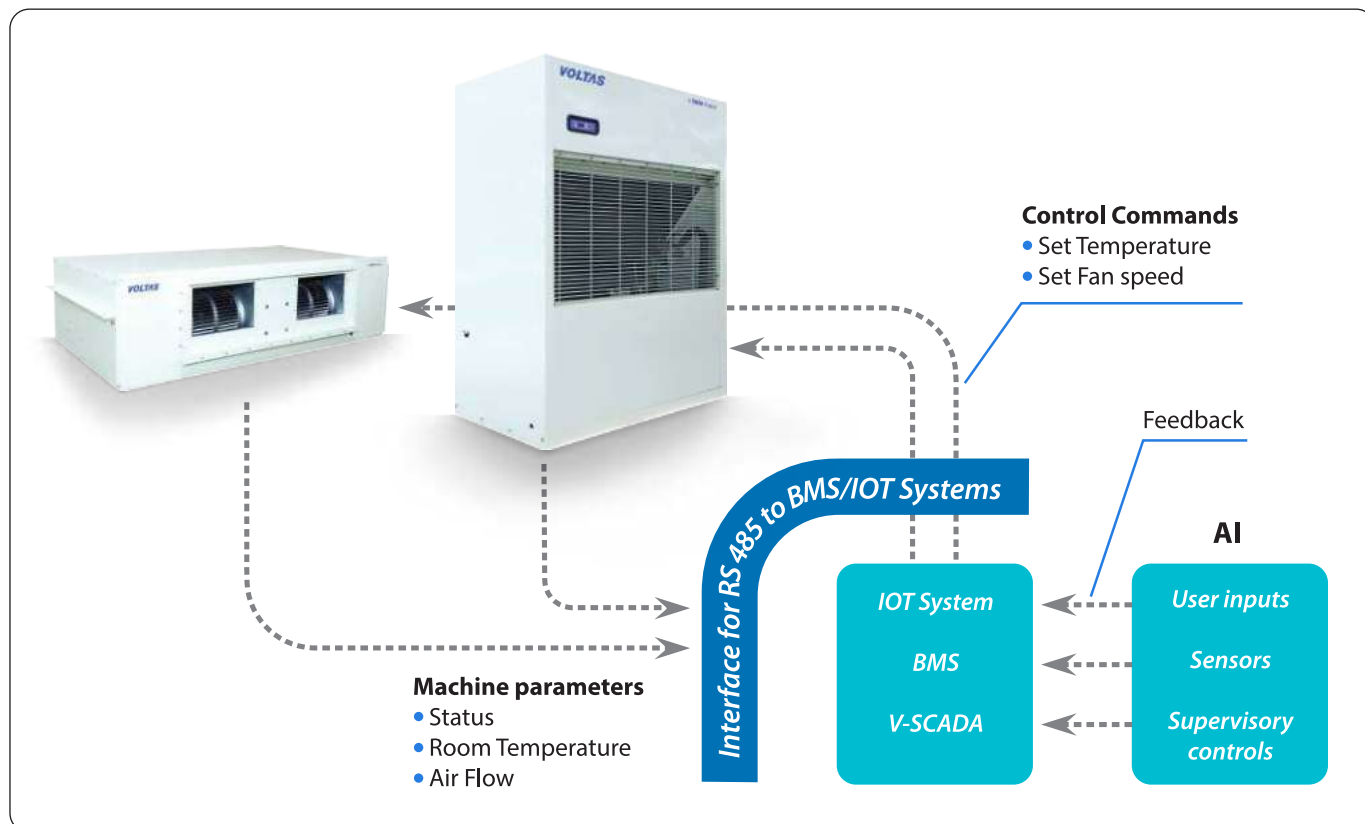
* Applicable only for ducted units controller

MONITORING AT YOUR FINGERTIPS



Intelligent Communication Port as a standard feature

Both Packaged and Ducted Split Units have controllers suitable for RS 485 communication. It comes in handy when connecting the units to third party BMS.



Also, Complete system can be wired



TECHNICAL DATA - DUCTABLE SPLIT UNITS



A/C DUCTABLE SPLIT UNITS (R22/R407c)							
Nominal Capacity	TR	5.0 TR	7.5 TR	10 TR	10 TR	15 TR	20 TR
Set Model no.- R22		ACADS05011	ACADS07511	ACADS10021	ACADS10011	ACADS15021	ACADS20021
ODU Model		ACDCUA05011	ACDCUA07511	ACDCUA05011	ACDCUA10011	ACDCUA07511	ACDCUA10011
Set Model no.- R407c		ACADS05012	ACADS07512	ACADS10022	ACADS10012	ACADS15022	ACADS20022
ODU Model		ACDCUA05012	ACDCUA07512	ACDCUA05012	ACDCUA10012	ACDCUA07512	ACDCUA10012
IDU Model		ACDEU50CZGIMRC	ACDEU75CZGIM	ACDEU100C2ZGIM	ACDEU100C1ZGIM	ACDEU150C2ZGIM	ACDEU200C2ZGIM
INDOOR UNITS (IDU)							
Airflow	CMH	3740	5780	7480	7480	11560	14960
Evaporator Fan		Centrifugal Forward Curved Fan, Double Inlet Double Width					
Power Supply	V/Ph/Hz	230 V - 1 Ph - 50 Hz (2 Wire, AC Supply)					
L x D x H	mm	1171 x 655 x 485	1508 x 830 x 407	1859 x 779 x 477	1859 x 779 x 477	2059 x 750 x 575	2100 x 1240 x 640
Net weight	kg	60	90	110	110	180	220
OUTDOOR UNITS (ODU)							
No. of Units/Set		1	1	2	1	2	2
No. of Compressors/CU		1	1	1	1	1	1
Compressor Type		Hermetic Scroll					
Power Supply	V/Ph/Hz	3 Ph - 415 V - 50 Hz - 4 wire (R,Y,B,N) + G (Earth)					
Condenser fan		Axial					
No. of Fans/CU		1	1	1	2	1	2
L x D x H /CU	mm	1200 X 450 X 960	1200 X 575 X 960	1200 X 450 X 960	1550 X 575 X 966	1200 X 575 X 960	1550 X 575 X 966
Net weight/CU	kg	130	145	130	160	145	160
Liquid Line Size	mm	12.7	15.8	12.7	15.8	15.8	15.8
Suction Line Size	mm	19	28.5	19	28.5	28.5	28.5
MCB Rating	A	32	50	63	63	100 SFU / MCCB	125 SFU / MCCB
Cable Size (Material)- Incomer	Sq.mm	4C x 6 (Cu) / 4C x 10 (Al)	4C x 10 (Cu) / 4C x 16 (Al)	4C x 16 (Cu) / 3.5C x 25 (Al)	4C x 16 (Cu) / 3.5C x 25 (Al)	3.5C x 25 (Cu) / 3.5C x 25 (Al)	3.5C x 35 (Cu) / 3.5C x 50 (Al)
Cable Size (Material)- ODU to IDU	Sq.mm	3C x 1.5 (Cu)	3C x 1.5 (Cu)	3C x 1.5 (Cu)	3C x 1.5 (Cu)	3C x 1.5 (Cu)	3C x 1.5 (Cu)

W/C DUCTABLE SPLIT UNITS (R22/R407c)						
Nominal Capacity	TR	5.0 TR	7.5 TR	10 TR	15 TR	
Set Model no.- R22		ACWDS05011	ACWDS07511	ACWDS10021	ACWDS15021	
ODU Model		ACDCUWSC05011	ACDCUWSC07511	ACDCUWSC05011	ACDCUWSC07511	
Set Model no.- R407c		ACWDS05012	ACWDS07512	ACWDS10022	ACWDS15022	
ODU Model		ACDCUWSC05012	ACDCUWSC07512	ACDCUWSC05012	ACDCUWSC07512	
IDU Model		ACDEU50CZGIMRC	ACDEU75CZGIM	ACDEU100C2ZGIM	ACDEU150C2ZGIM	
INDOOR UNITS (IDU)						
Specifications same as given above for Evaporator units of A/C models						
OUTDOOR UNITS (ODU)						
No. of Units/Set		1	1	2	2	
No. of Compressors/CU		1	1	1	1	
Compressor Type		Hermetic Scroll				
Power Supply	V/Ph/Hz	3 Ph - 415 V - 50 Hz - 4 wire (R,Y,B,N) + G (Earth)				
Condenser Water (In/Out)	Inch	1-1/4" BSP	1-1/4" BSP	1-1/4" BSP	1-1/4" BSP	
Water Flow Rate/CU	LPM	73	116	73	116	
Length x Depth x Height /CU	mm	900 X 665 X 615	900 X 665 X 615	900 X 665 X 615	900 X 665 X 615	
Net weight/CU	kg	155	170	155	170	
Liquid Line Size	mm	12.7	15.8	12.7	15.8	
Suction Line Size	mm	19	28.5	19	28.5	
MCB Rating	A	25	50	50	100 SFU / MCCB	
Cable Size (Material)- Incomer	Sq.mm	4C x 4 (Cu) / 4C x 6 (Al)	4C x 10 (Cu) / 4C x 16 (Al)	4C x 10 (Cu) / 4C x 16 (Al)	3.5C x 25 (Cu) / 3.5C x 25 (Al)	
Cable Size (Material)- ODU to IDU	Sq.mm	3C x 1.5 (Cu)	3C x 1.5 (Cu)	3C x 1.5 (Cu)	3C x 1.5 (Cu)	

Notes:

- The nominal capacities mentioned are at rating conditions as per IS 8148.
- The Gas charging at Factory is as per standard connection distance between ODU & IDU. For extra lengths, Gas topping up at site is required.
- The piping sizes given are recommended for 7.5 m equivalent length between ODU & IDU. For longer piping lengths, please contact Voltas representative.
- In addition to mentioned above, one more interlocking cable of size 3C x 1.5 sq mm is required between IDU & ODU
- Please contact VOLTAS sales representative for units below 5.5TR capacity & Condensing Units.

Product design and innovation is a continuous process in VOLTAS and hence the above specifications are subject to change without notice.

TECHNICAL DATA - AIR COOLED UNITS



A/C DUCTABLE SPLIT UNITS (R410a)							
Nominal Capacity	TR	5.5 TR	8.5 TR	11 TR	11 TR	17 TR	21 TR
Set Model no.		ACADS05513	ACADS08513	ACADS11013	ACADS11023	ACADS17023	ACADS21023
ODU Model		ACDCUA05513	ACDCUA08513	ACDCUA11013	ACDCUA05513	ACDCUA08513	ACDCUA11013
IDU Model		ACDEU55CZGIMRC410	ACDEU85CZGIMR410	ACDEU110C1ZGIMR410	ACDEU110C2ZGIMR410	ACDEU170C2ZGIMR410	ACDEU210C2ZGIM
INDOOR UNITS (IDU)							
Airflow	CHM	3740	5780	7480	7480	11560	14960
Evaporator Fan		Centrifugal Forward Curved Fan, Double Inlet Double Width					
Power Supply	V/Ph/Hz	230 V - 1 Ph - 50 Hz (2 Wire, AC Supply)					
Length	mm	1171	1508	1859	1859	2059	2100
Depth	mm	655	830	779	779	750	1240
Height	mm	485	407	477	477	575	640
Net weight	kg	60	90	110	110	180	220
OUTDOOR UNITS (ODU)							
No. of Units/Set		1	1	1	2	2	2
No. of Compressors/CU		1	1	1	1	1	1
Compressor Type		Hermetic Scroll					
Power Supply	V/Ph/Hz	3 Ph - 415 V - 50 Hz - 4 wire (R,Y,B,N) + G (Earth)					
Condenser fan		Axial					
No. of Fans/CU		1	1	2	1	1	2
Length/CU	mm	1200	1200	1550	1200	1200	1550
Depth/CU	mm	450	575	575	450	575	575
Height/CU	mm	960	960	966	960	960	966
Net weight/CU	kg	130	145	160	130	145	160
Liquid Line Size	mm	12.7	15.8	15.8	12.7	15.8	15.8
Suction Line Size	mm	19	28.5	28.5	19	28.5	28.5
MCB Rating	A	32	63	63	63	100 SFU / MCCB	125 SFU / MCCB
Cable Size (Material)- Incomer	Sq.mm	4C x 6 (Cu) / 4C x 10 (Al)	4C x 16 (Cu) / 3.5C x 25 (Al)	4C x 16 (Cu) / 3.5C x 25 (Al)	4C x 16 (Cu) / 3.5C x 25 (Al)	3.5C x 25 (Cu) / 3.5C x 35 (Al)	3.5C x 35 (Cu) / 3.5C x 50 (Al)
Cable Size (Material)- ODU to IDU	Sq.mm	3C x 1.5 (Cu)	3C x 1.5 (Cu)	3C x 1.5 (Cu)	3C x 1.5 (Cu)	3C x 1.5 (Cu)	3C x 1.5 (Cu)

W/C DUCTABLE SPLIT UNITS (R410A)					
Nominal capacity	TR	5.5 TR	8.5 TR	11 TR	17 TR
Set Model no.- R410A		ACWDS05513	ACWDS08513	ACWDS11023	ACWDS17023
ODU Model		ACDCUWSC05513	ACDCUWSC08513	ACDCUWSC05513	ACDCUWSC08513
IDU Model		ACDEU55CZGIMRC410	ACDEU85CZGIMR410	ACDEU110C2ZGIMR410	ACDEU170C2ZGIMR410
INDOOR UNITS (IDU)					
Airflow	CMH	3740	5780	7480	11560
Evaporator Fan		Centrifugal Forward Curved Fan, Double Inlet Double Width			
Power Supply	V/Ph/Hz	30 V - 1 Ph - 50 Hz (2 Wire, AC Supply)			
L x D x H	mm	1171 x 655 x 485	1508 x 830 x 407	1859 x 779 x 477	2059 x 750 x 575
Net weight	kg	60	90	110	180
OUTDOOR UNITS (ODU)					
No.of Units/Set		1	1	2	2
No. of Compressors/CU		1	1	1	1
Compressor Type		Hermetic Scroll			
Power Supply	V/Ph/Hz	3 Ph - 415 V - 50 Hz - 4 wire (R,Y,B,N) + G (Earth)			
Condenser Water (In/Out)	Inch	1-1/4" BSP	1-1/4" BSP	1-1/4" BSP	1-1/4" BSP
Water Flow Rate/CU	LPM	73	116	73	116
Length x Depth x Height /CU	mm	900 x 665 x 615	900 x 665 x 615	900 x 665 x 615	900 x 665 x 615
Net weight/CU	kg	155	170	155	170
liquid line Size	mm	12.7	15.8	12.7	15.8
Suction Line Size	mm	19	28.5	19	28.5
MCB Rating	A	25	50	50	100 SFU/ MCCB
Cable Size (Material)- Incomer	Sq.mm	4C x 4 (Cu)/ 4C x 6 (Al)	4C x 10 (Cu) / 4C x 16 (Al)	4C x 10 (Cu) / 4C x 16 (Al)	3.5 C x 25 (Cu) / 3.5C x 25 (Al)
Gable Size (Mater al)- ODU to IDU	Sq.mm	3C x 1.5 (Cu)	3C x 1.5 (Cu)	3C x 1.5 (Cu)	3C x 1.5 (Cu)

Notes:

- The nominal capacities mentioned are at rating conditions as per IS 8148.
- The Gas charging at Factory is as per standard connection distance between ODU & IDU. For extra lengths, Gas topping up at site is required.
- The piping sizes given are recommended for 7.5 m equivalent length between ODU & IDU. For longer piping lengths, please contact Voltas representative.
- In addition to mentioned above, one more interlocking cable of size 3C x 1.5 sq mm is required between IDU & ODU
- Please contact VOLTAS sales representative for units below 5.5TR capacity & Condensing Units.

Product design and innovation is a continuous process in VOLTAS and hence the above specifications are subject to change without notice.

TECHNICAL DATA - AIR COOLED PACKAGED UNITS

A/C PACKAGED UNITS (R22/R407c)						
Nominal Capacity	TR	5.0 TR	7.5 TR	10 TR	15 TR	20 TR
Set Model no.- R22		ACDPUASC05011	ACDPUASC07511	ACDPUASC10021	ACDPUASC15021	ACDPUASC20021
IDU Model		ACDPEUASC05011	M22:Q31	ACDPEUASC10021	ACDPEUASC15021	ACDPEUASC20021
Set Model no.- R407c		ACDPUASC05012	ACDPUASC07512	ACDPUASC10022	ACDPUASC15022	ACDPUASC20022
IDU Model		ACDPEUASC05012	ACDPEUASC07512	ACDPEUASC10022	ACDPEUASC15022	ACDPEUASC20022
ODU Model		ACPDC55	ACPDC85	ACPDC55 X 2	ACPDC85 x 2	ACPDC110 X 2
INDOOR UNITS (IDU)						
Airflow	CMH	3740	5780	7480	11560	14960
No. of Compressors		1	1	2	2	2
Compressor Type		Hermetic Scroll				
Power Supply	V/Ph/Hz	3 Ph - 415 V - 50 Hz - 4 wire (R,Y,B,N) + G (Earth)				
Evaporator Fan		Centrifugal Forward Curved Fan, Double Inlet Double Width				
Length	mm	961	961	1160	1428	1941
Depth	mm	731	731	736	800	850
Height	mm	1661	1661	1798	1873	1873
Net weight	kg	221	231	287	410	550
OUTDOOR UNITS (ODU)						
No. of Condensers		1	1	2	2	2
Power Supply	V/Ph/Hz	230 V - 1 Ph - 50 Hz (2 Wire, AC Supply)				
Condenser fan		Axial				
No. of Fans/Condenser		1	1	1	1	2
Length/Condenser	mm	1200	1200	1200	1200	1550
Depth/Condenser	mm	450	575	450	575	575
Height/Condenser	mm	960	960	960	960	966
Net weight/Condenser	kg	95	107	95	107	119
Liquid Line Size	mm	12.7	15.8	12.7	15.8	15.8
Hot gas Line Size	mm	15.8	22	15.8	22	22
MCB Rating	A	25	40	50	63	100 SFU / MCCB
Cable Size (Material)- Incomer	Sq.mm	4C x 4 (Cu) / 4C x 6 (Al)	4C x 4 (Cu) / 4C x 6 (Al)	4C x 10 (Cu) / 4C x 16 (Al)	4C x 10 (Cu) / 4C x 16 (Al)	3.5C x 25 (Cu) / 3.5C x 35 (Al)
Cable Size (Material)- ODU to IDU	Sq.mm	3C x 1.5 (Cu)	3C x 1.5 (Cu)	3C x 1.5 (Cu)	3C x 1.5 (Cu)	3C x 1.5 (Cu)

W/C PACKAGED UNITS (R22/R407c)						
Nominal Capacity	TR	5.0 TR	7.5 TR	10 TR	15 TR	21 TR
Set Model no.- R22		ACDPUWSC05011	ACDPUWSC07511	ACDPUWSC10021	ACDPUWSC15021	ACDPUWSC20021
IDU Model		ACDPEUWSC05011	ACDPEUWSC07511	ACDPEUWSC10021	ACDPEUWSC15021	ACDPEUWSC20021
Set Model no.- R407c		ACDPUWSC05012	ACDPUWSC07512	ACDPUWSC10022	ACDPUWSC15022	ACDPUWSC20022
IDU Model		ACDPEUWSC05012	ACDPEUWSC07512	ACDPEUWSC10022	ACDPEUWSC15022	ACDPEUWSC20022
INDOOR UNITS (IDU)						
Airflow	CMH	3740	5780	7480	11560	14960
No. of Compressors		1	1	2	2	2
Compressor Type		Hermetic Scroll				
Power Supply	V/Ph/Hz	3 Ph - 415 V - 50 Hz - 4 wire (R,Y,B,N) + G (Earth)				
No. of Condensers		1	1	2	2	2
Water Inlet/Outlet Size	Inch	1-1/4" BSP	1-1/4" BSP	1-1/4" BSP	1-1/4" BSP	1-1/4" BSP
Water Flow Rate/Condenser	LPM	73	116	73	116	146
Length	mm	961	961	1160	1428	1941
Depth	mm	731	731	736	800	850
Height	mm	1661	1661	1798	1873	1873
Net weight	kg	252	260	350	480	615
MCB Rating	A	25	32	40	63	100 SFU / MCCB
Cable Size (Material)- Incomer	Sq.mm	4C x 4 (Cu) / 4C x 6 (Al)	4C x 4 (Cu) / 4C x 6 (Al)	4C x 10 (Cu) / 4C x 16 (Al)	4C x 10 (Cu) / 4C x 16 (Al)	3.5C x 25 (Cu) / 3.5C x 35 (Al)

Notes:

- The nominal capacities mentioned are at rating conditions as per IS 8148.
- Only Water-Cooled units are Factory Gas charged & Air-cooled units are to be charged at site.
- The piping sizes given are recommended for 7.5 m equivalent length between ODU & IDU. For longer piping lengths, please contact Voltas representative.
- In addition to mentioned above, one more interlocking cable of size 3C x 1.5 sq mm is required between IDU & ODU

Product design and innovation is a continuous process in VOLTAS and hence the above specifications are subject to change without notice.

TECHNICAL DATA - PACKAGED UNITS

A/C PACKAGED UNITS (R410a)						
Nominal Capacity	TR	5.5 TR	8.5 TR	11 TR	17 TR	21 TR
Set Model no		ACDPUASC05513	ACDPUASC08513	ACDPUASC11023	ACDPUASC17023	ACDPUASC21023
IDU Model		ACDPEUASC05513	ACDPEUASC08513	ACDPEUASC11023	ACDPEUASC17023	ACDPEUASC21023
ODU Model		ACPDC55	ACPDC85	ACPDC55 X2	ACPDC85 X 2	ACPDC110 X 2
INDOOR UNITS (IDU)						
Airflow	CMH	3740	5780	7480	11560	14960
No. of Compressors		1	1	2	2	2
Compressor Type		Hermetic Scroll				
Power Supply	V/Ph/Hz	3 Ph - 415 V - 50 Hz - 4 wire (R,Y,B,N) + G (Earth)				
Evaporator Fan		Centrifugal Forward Curved Fan, Double Inlet Double Width				
Length	mm	961	961	1160	1428	1941
Depth	mm	731	731	736	800	850
Height	mm	1661	1661	1798	1873	1873
Net weight	kg	221	231	287	410	550
OUTDOOR UNITS (ODU)						
No. of Condensers		1	1	2	2	2
Power Supply	V/Ph/Hz	230 V - 1 Ph - 50 Hz (2 Wire, AC Supply)				
Condenser fan		Axial				
No. of Fans/Condenser		1	1	1	1	2
Length/Condenser	mm	1200	1200	1200	1200	1550
Depth/Condenser	mm	450	575	450	575	575
Height/Condenser	mm	960	960	960	960	966
Net weight/Condenser	kg	95	107	95	107	119
Liquid Line Size	mm	12.7	15.8	12.7	15.8	15.8
Hot gas Line Size	mm	15.8	19	15.8	19	19
MCB Rating	A	32	50	63	63	100 SFU / MCCB
Cable Size (Material) - Incomer	Sq.mm	4C x 4 Cu / 4C x 6 Al	4C x 10 Cu / 4C x 16 Al	4C x 10 Cu / 4C x 16 Al	4C x 10 (Cu) / 4C x 16 (Al)	3.5C x 25 Cu / 3.5C x 35 Al
Cable Size (Material) - ODU to IDU	Sq.mm	3C x 1.5 Cu	3C x 1.5 Cu	3C x 1.5 Cu	3C x 1.5 (Cu)	3C x 1.5 Cu

W/C PACKAGED UNITS (R410A)					
Nominal capacity	TR	5.5 TR	8.5 TR	11 TR	17 TR
Set Model no.- R410A		ACDPUWSC05513	ACDPUWSC08513	ACDPUWSC11023	ACDPUWSC17023
IDU model		ACDPEUWSC05513	ACDPEUWSC08513	ACDPEUWSC11023	ACDPEUWSC17023
INDOOR UNITS (IDU)					
Airflow	CMH	3740	5780	7480	11560
No.of Compressors		1	1	2	2
Compressor Type		Hermetic Scroll			
Power Supply	V/Ph/Hz	3 Ph - 415 V - 50 Hz - 4 wire (R,Y,B,N) + G (Earth)			
No.of Condensen		1	1	2	2
water Inlet/Outlet Size	Inch	1-1/4" BSP	1-1/4" BSP	1-1/4" BSP	1-1/4" BSP
Water Flow Rate/Condenser	LPM	73	116	73	116
Length	mm	961	961	1160	1428
Depth	mm	731	731	736	800
Height	mm	1661	1661	1798	1873
Net weight	kg	252	260	350	480
MCB Rating	A	25	32	40	63
Cable Size (Material)- Incomer	Sq.mm	4C x 4 (Cu) / 4C x 6 (Al)	4C x 4 (Cu) / 4C x 6 (Al)	4C x 10 (Cu) / 4C x 16 (Al)	4C x 10 (Cu) / 4C x 16 (Al)

Notes:
1. The nominal capacities mentioned are at rating conditions as per IS 8148.
2. Only Water-Cooled units are Factory Gas charged & Air-cooled units are to be charged at site.
3. The piping sizes given are recommended for 7.5 m equivalent length between ODU & IDU. For longer piping lengths, please contact Voltas representative.
4. In addition to mentioned above, one more interlocking cable of size 3C x 1.5 sq mm is required between IDU & ODU

Product design and innovation is a continuous process in VOLTAS and hence the above specifications are subject to change without notice.

VOLTAS

SMART MICRO-PROCESSOR CONTROLLED PACKAGE & DUCTED SYSTEMS*

NEW
LAUNCH

R410A Water Cooled
Ductable and Packaged AC
Available range from
5.5 TR to 17 TR
(5.5, 8.5, 11 and 17 TR)

R410a



*AVAILABLE IN INVERTER SERIES

BMS COMPATIBLE

A **TATA** Product

Providing the most efficient and reliable after sales service solutions

TATA Steel - Kalinganagar



Kolkata Airport



Rashtrapati Bhavan



TCS Siruseri - Chennai



Delhi/Chennai
Metro Rail Project



Magarpatta City - Pune



Voltas service solutions are offered throughout India for more than 1 million TR of HVAC equipment across Commercial, Industrial and Urban Infrastructure segments.



Voltas
Customer
Care

LIFE CYCLE SUPPORT

Through MANAGED Services



Remote Monitoring



Digital Service Reports



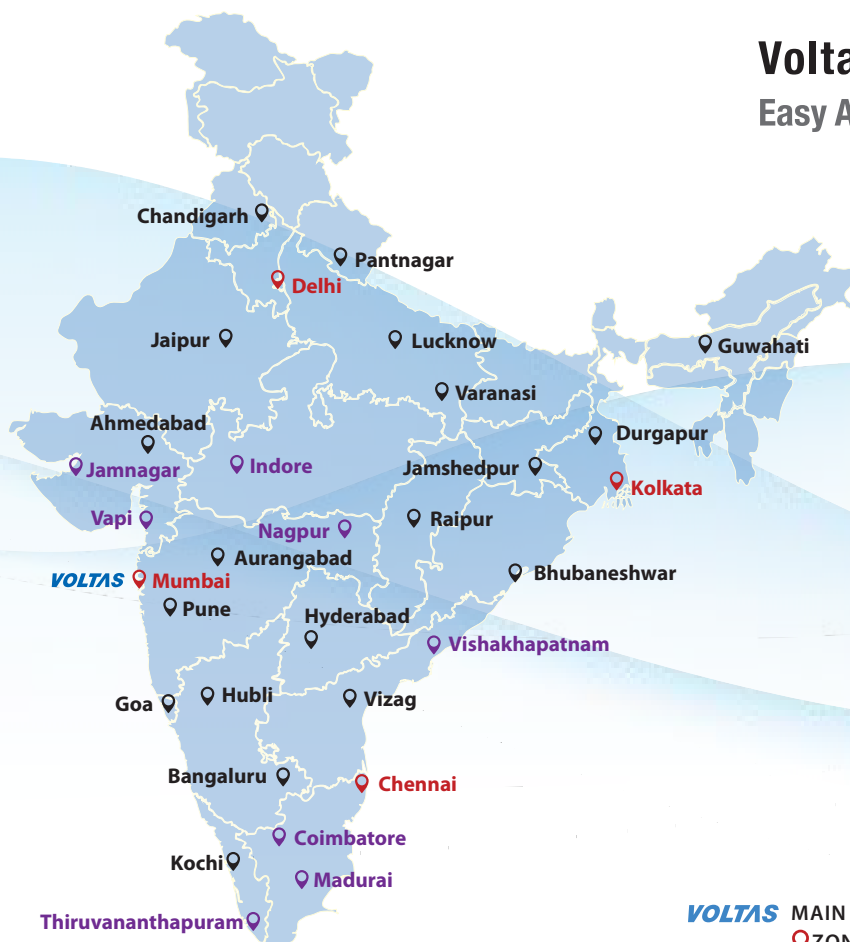
24x7 Helpdesk

ONE-STOP- SOLUTION FOR LIFECYCLE MANAGEMENT OF YOUR COOLING EQUIPMENT

- We have the widest service network in the country
- Our expertise lies in HVAC equipment and the product life cycle management will be less when we provide cost effective annual maintenance contracts
- We are brand agnostic and offer solutions for maintaining any Chillers
- We also assist to modify, revamp or upgrade your old HVAC system - We are there for you
- We provide IOT for large HVAC system in industrial, commercial and retail applications
- We improvise indoor air quality (IAQ)

CUSTOMER CARE

Voltas National Network Easy Access • Quick Satisfaction



CUSTOMER CARE
9100660100

- HVAC
- Refrigeration
- Electro-mechanical Services
- Energy Management Services

VOLTAS

A **TATA** Product

CUSTOMER CARE SUPPORT

VOLTAS LIMITED

Commercial Air Conditioning Business, Voltas House 'B', 3rd Floor, T.B.Kadam Marg, Chinchpokli, Mumbai – 400033, India. Tel.: +91 22 6665 6857.

Email: cac enquiry@voltas.com

Website: www.voltas.com

NORTH ZONE: DELHI (011) 66505550/ 66505647 **CHANDIGARH** (0172) 4111800 **JAIPUR** (0141) 6541011 **LUCKNOW** 8840739788 **EAST ZONE:** KOLKATA (033) 66266200/66266201/66266205 **BHUBANESHWAR** (0674) 2544919 **RAIPUR** (077) 14033886 **JAMSHEDPUR** (0657) 6622365/6622377 **WEST ZONE:** MUMBAI (022) 66656666 **NAGPUR** (0712) 6456894 **AHMEDABAD** (079) 66301100 **PUNE** (020) 68687400 **SOUTH ZONE:** CHENNAI (044) 66760333/66760341 **BENGALURU** (080) 22535600 **HYDERABAD** (040) 66743030 **COCHIN** (0484) 6605546.